

Quicks Road Wimbledon, SW19 1EY

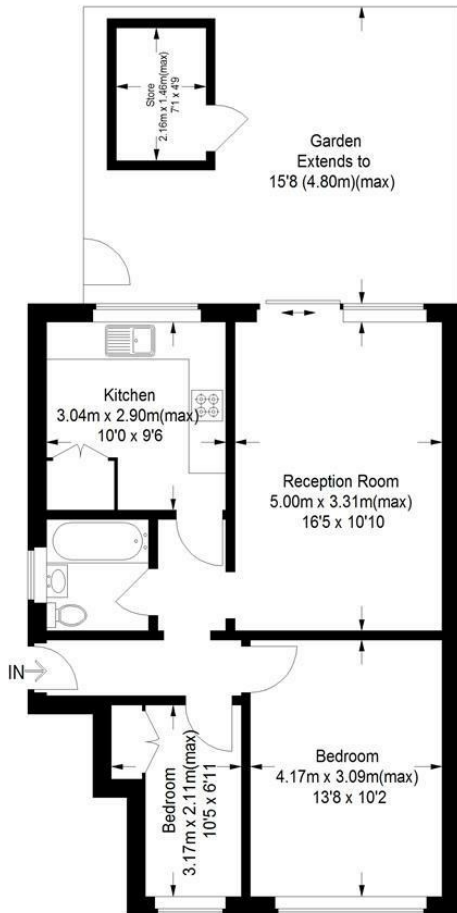
£435,000 Leasehold - Share of Freehold



A well presented, two bedroom, ground floor purpose-built flat with a South-facing garden and no onward chain located in the sought after 'Battles' area of Wimbledon conveniently positioned between Northern and Mainline Line stations. There is also a large bright reception room with doors out to the sunny garden, a separate kitchen and modern family bathroom. With it's own front door, rear access and share of freehold this is a perfect first time purchase or investment.

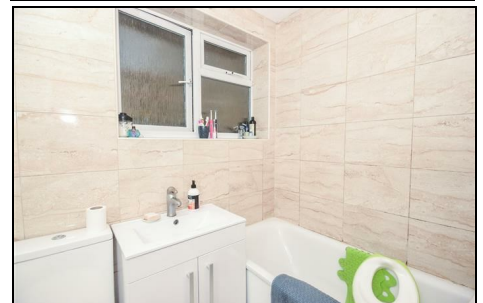
Quicks Road, SW19

Approximate Gross Internal Area = 55.5 sq m / 597 sq ft
 Store = 3.1 sq m / 33 sq ft
 Total = 58.6 sq m / 631 sq ft



This floor plan is for representation purposes only and is not drawn to scale. Whilst every attempt has been made to ensure its accuracy measurements are approximate only and should be checked before making any decisions reliant upon them. Copyright Bespokeplans.co.uk 2020 (ID693611)

- Purpose-Built Ground Floor Flat
- Two Bedrooms
- South-Facing Garden
- Well Proportioned
- No Onward Chain
- Close to Northern and Mainline Stations
- Share of Freehold



Energy Efficiency Rating		Environmental Impact (CO ₂) Rating	
Current	Potential	Current	Potential
Very energy efficient - lower running costs		Very environmentally friendly - lower CO ₂ emissions	
(92 plus) A		(92 plus) A	
(81-91) B		(81-91) B	
(69-80) C		(69-80) C	
(55-68) D	58	(55-68) D	55
(39-54) E		(39-54) E	
(21-38) F		(21-38) F	
(1-20) G		(1-20) G	
Not energy efficient - higher running costs		Not environmentally friendly - higher CO ₂ emissions	
England & Wales	EU Directive 2002/91/EC	England & Wales	EU Directive 2002/91/EC

For Free Mortgage Quote and Best Mortgage Rates, call an Ellisons Mortgage Advisor on 020 8944 9494



Although these particulars are believed to be correct, their accuracy is not guaranteed and they do not form part of any contract.

Celebrating 30 years of successful Sales and Lettings in Merton

